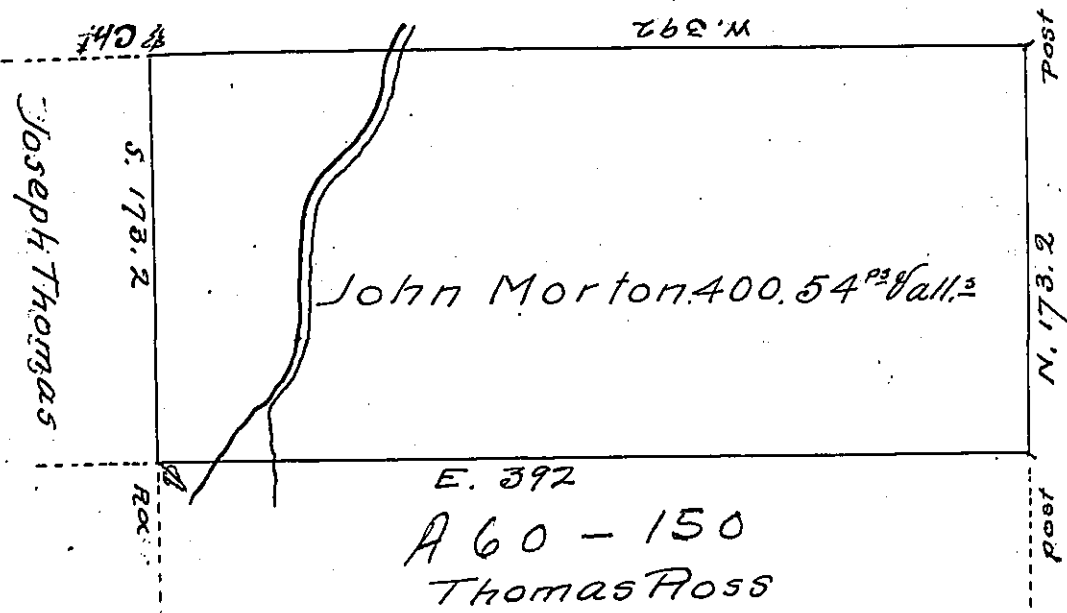


Vact.



By Virtue of a Warrant dated 10<sup>th</sup> Feb<sup>y</sup> 1794 surveyed the 6<sup>th</sup> day of June 1794 unto John Morton the above described Tract of Four hundred acres & 54 perches of Land and usual allowance. Situated on a small branch of Bowmans Creek adjoining Thomas Ross in Luzerne County

By W<sup>m</sup> Montgomery D. Sr

Daniel Brodhead Esq<sup>r</sup>  
Surveyor Gen<sup>l</sup> of Penn<sup>a</sup>

IN TESTIMONY that the above is a copy of the original remaining on file in the Department of Internal Affairs of Pennsylvania, made conformably to an Act of Assembly approved the 16th day of February, 1833, I have hereunto set my Hand and caused the Seal of said Department to be affixed at Harrisburg, this twenty-fourth day of November 1905

*Leach B. Brown*  
Secretary of Internal Affairs.